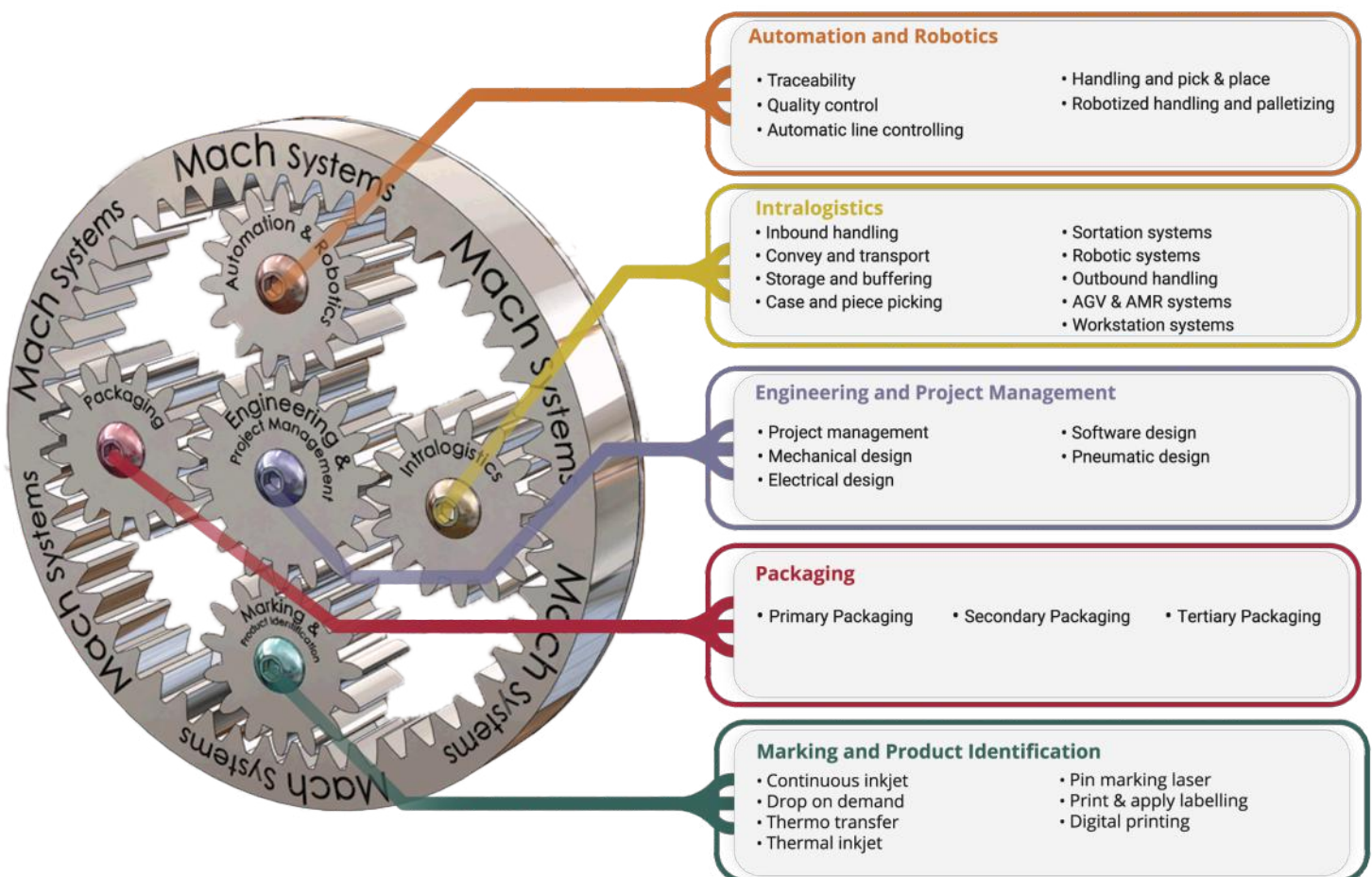


Marking and Product Identification Division

About us

Mach Foreign Trade Distribution is the main industrial integrator with Romanian capital, which implements complex industrial projects. Over time, we have diversified our portfolio of equipment and applications, focusing on quality and efficiency in the following **domains**:



The Marking and Product Identification Division offers the latest and most modern industrial marking solutions on a variety of materials. The marking machines offered by Mach possess the highest quality standards, specific speeds for small and large production lines, with optimal consumption costs. In the following, we will provide details related to ink marking, laser, micropercussion, thermo-transfer, pressing, and rolling. Also, depending on the marking requirements, codes and graphics can be printed for:

- Marketing campaigns;
- Protect trademarks against counterfeiting;
- Improving traceability for large supply chain conditions.



Small character coding - CIJ

Speed, accuracy, connectivity, and the ability to operate in difficult and varied environments place the Ax series range of printers as a top solution.



Small character coding - CIJ



Thermal Transfer Overprinting – TTO

For coding flexible packaging or preprinted labels, TTO is an ideal solution. Print at 300 dpi alphanumeric characters, Barcodes, or even logos.

Thermal Transfer Overprinting – TTO



Large character coding

Large character coding is suitable for larger products, pans, and boxes of different types.



Large character coding - DOD



Don peen marking



Dot peen marking

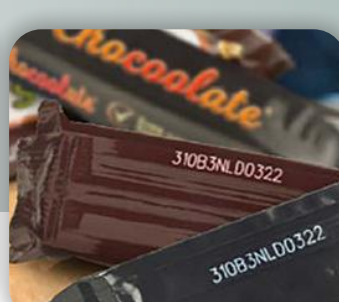
The first 100% portable dot peen marking equipment with marking-head on batteries and wireless connection. Technomark dot peen equipment marks texts, symbols, logos, QR, and Datamatrix 2D on a variety of materials.



Laser coding

Laser coding

The high-speed laser provides ideal permanent markings when brand protection against counterfeiting and product traceability is essential.





Thermal ink Jet

Gx series thermal ink printing solutions are versatile, easy to integrate, and easy to operate. It is the perfect printing solution at resolutions up to 600 dpi on cardboard, foil, and even metal, without the need for frequent technical revisions.

Thermal ink Jet



Digital printing

Based on Piezo technology, it benefits from its simplicity with a small number of moving parts. Automatic cleaning, inkjet module protection, and printhead alignment functions reduce the operator's intervention.

Digital printing



Label printing and application

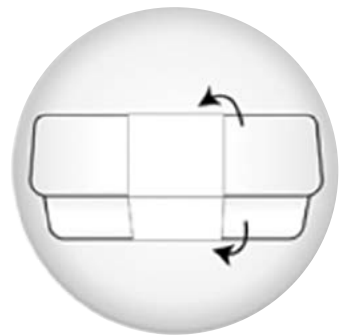
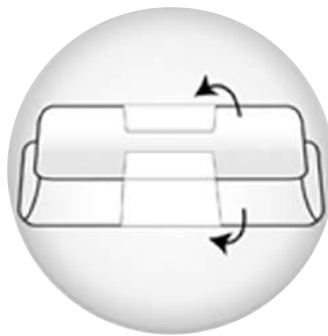
Designed to perform in a wide range of applications, Mach systems for printing and applying labels can automate the traceability process.

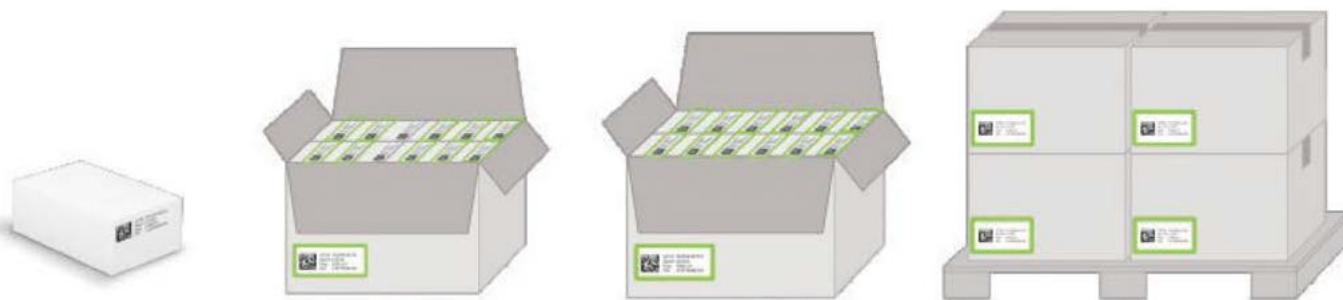
Label P&A



Application systems on products with irregular shapes

In factories, speed and efficiency make the difference. Without affecting the quality, we offer label application solutions of any kind (colored, glossy, metallic, fine, with special textures) and on any form of the product. Also, the position of the label application is not a challenge for us.

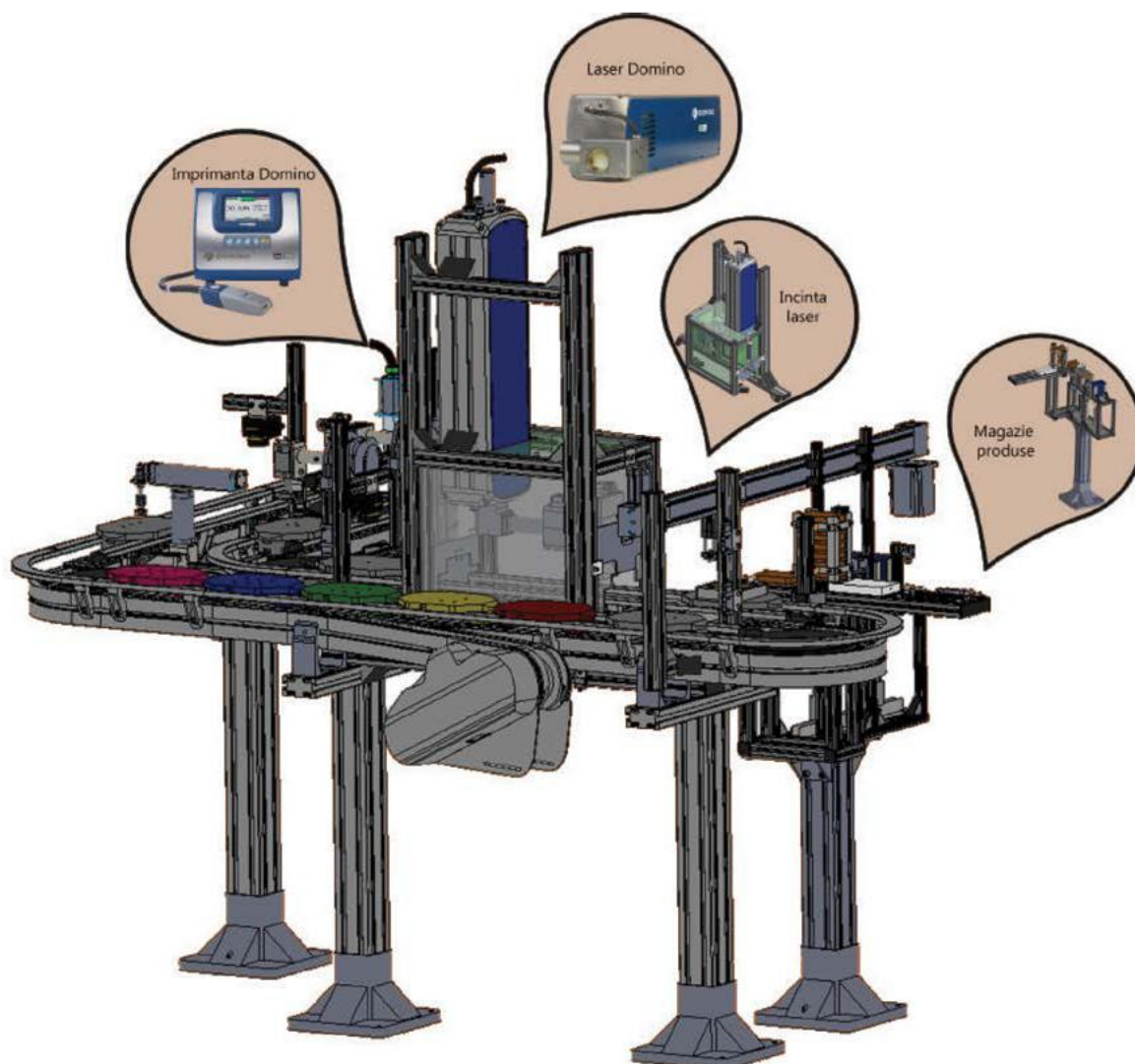




Turnkey solutions - *PharMach - serialization solution*

Mach introduces on the market turnkey industrial stations and modules, which serve several types of production requirements.

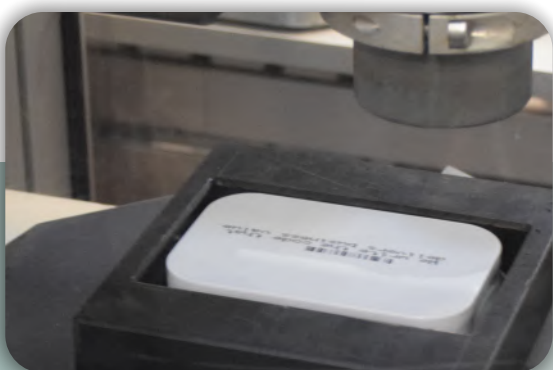


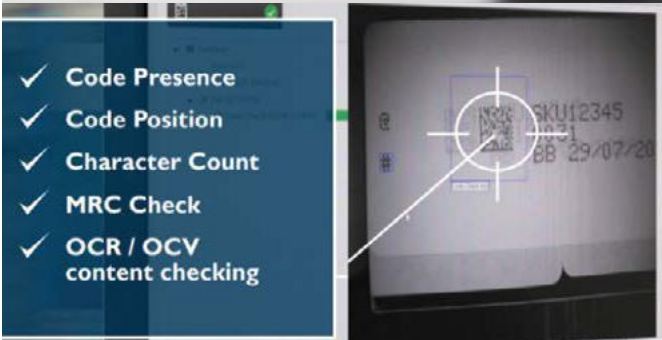


Customized module CIJ and laser inscription

Mach makes **customized industrial modules** for the most varied requirements in production. Thus, the Mach **laser marking module** and the **small character Ax150i printer** are suitable for **any production process** and ensure the complete product supply, marking, verification, and evacuation cycle.

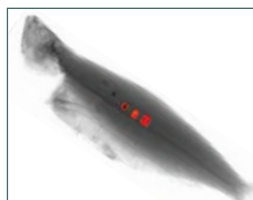
The module is configurable for **products of different sizes** and **materials** (metal, plastic, cardboard). Both codes and products were marked on the products with **complex graphics** (logo and graphic constructions).





Inspection and quality control

- Metal detection systems
- X-ray control systems
- Code presence verification systems on products: R-Series, smart vision solution



Combo system

Weighing and X-ray detection – 2 solutions in one equipment

Combo systems combine weighing, metal detection, and other contaminants for maximum efficiency.

The design is robust, offering solutions for both small spaces and complex production lines.

Partners

ALTECH: Italia – Label print&apply

AMBAFLEX: Netherlands -conveying systems

CONVEYOR UNITS: UK - conveying systems

DOMINO: UK – industrial coding equipment and systems

FLEXLINK: Sweden – conveying systems and pallet transport systems

INTERROLL: Switzerland- Globally provider for handling solutions

LAKE IMAGE SYSTEMS: UK – data quality and integrity solutions

for the printing, packaging, and mailing industries

LOMA: UK - Systems of detection of metals and contaminants

TECHNOmark: laser and micropercussion systems

ZEBRA: USA - printing, barcode scanning,
and international coding systems



Components, Vision systems and sensors

COGNEX: USA – Vision systems

COVAL: France – Vacuum technology

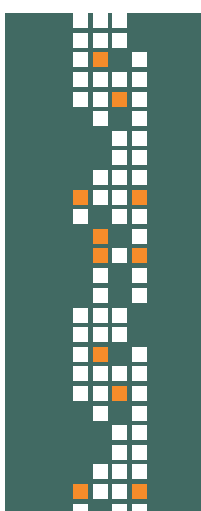
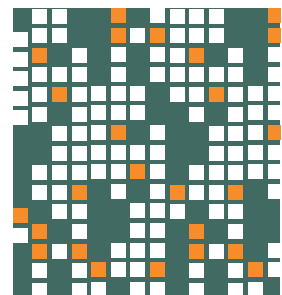
FESTO: Germany – Pneumatic and electrical components and systems

KEYENCE: SUA – Vision systems

SICK: Germanaia - Sensors

SIEMENS: Germanaia - Sensors

WENGLOR: Germanaia - Sensors



28th Ion Voda Viteazul St., code 040813,
Bucharest, Romania
Telephone: +40 214 60 98 40/41/43/44
RO 6286000 | J40/18271/1994
www.mach.ro

