

Spiral elevator

The Spiral elevator is a compact and high throughput solution for up or down elevation.

No controls are needed. The Spiral provides a continuous product flow and is as simple and reliable as a normal straight conveyor.

The compact spiral-shaped track is the key to its unique compact construction that saves valuable floor space.

The application range is wide, from the handling of individual parcels or totes to handling of packed items such as shrink-wrapped bottle packs or cartons.

The Spiral elevator is applied in filling and packing lines.

Principles of operation

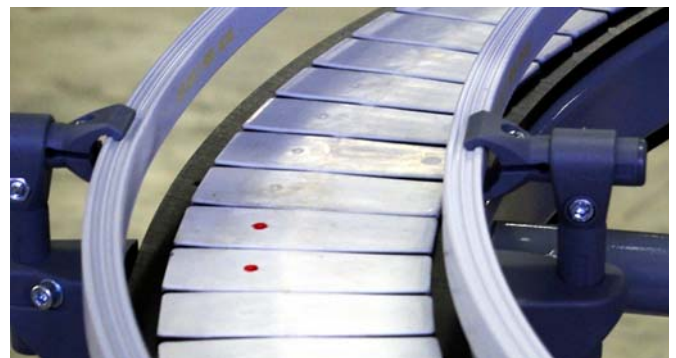
The purpose of the Spiral Elevator is to transport products / goods vertically to bridge a difference of height or to function as buffer zone.

Technical specifications

- 500 mm inclination per winding (9 degree)
- 3-8 windings for the Standard Spiral elevator and for Fast track Spiral elevator, 3-4 windings.
- 1000 mm center diameter
- Speed 5-60 meter/minute
- Lower height:
600, 700, 800,900 or 1000
Adjustable -50/+70 mm
- Max load 10 Kg/m
- Max product height is 300 mm
- Drive and idler ends are horizontal
- Chain width 100 mm
- Friction top chain
- Steel chain with bearings running on the inner guide rail
- Column diameter 160 mm
- M8 thread for guide rail



Standard features (not included)



- Standard guide rail brackets
- Plastic guide rail
- SEW gearmotor type SA37/SA47

Ordering information

Use online configurator when ordering.

PO

X45

XS

X65

X65P

X85

X85P

XH

XK

XKP

X180

X300

GR

CS

XT

WL

XC

XF

XD

ELV

CTL

FST

TR

APX

IDX

Spiral elevator

Ordering information

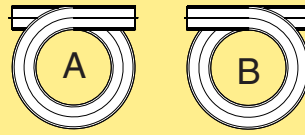
Example of a string obtained from the configurator:

Item no	A	B	C	D	E	F	G	H	I
5995512	100	-	1000	-500	-S	-A	-TU	-800	-3 -25

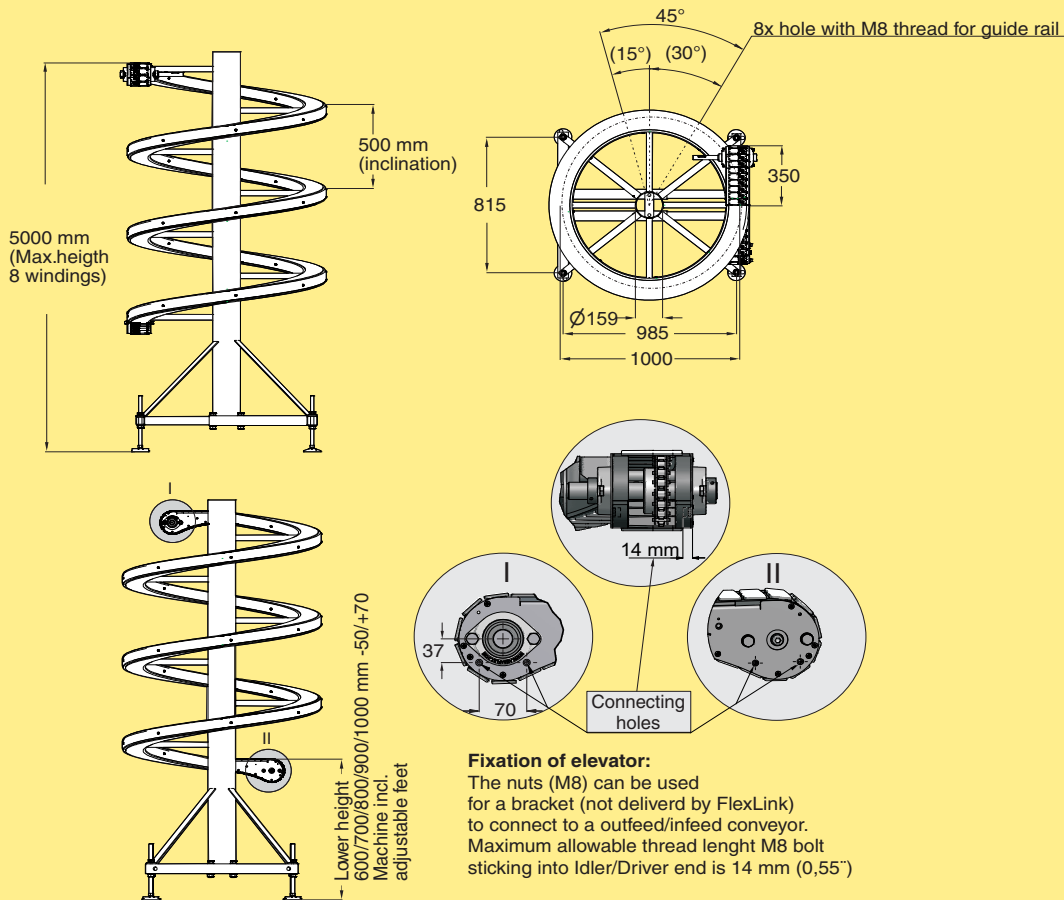
5995512- Item number (Standard)
 5995958- Item number (Fast track)

- A Chain width
- B Spiral center of chain diameter
- C Incline per winding
- D Mild steel (S) material configuration
- E Configuration A or B
- F Transport direction up/down TU or TD
- G Lower height 600/700/800/900/1000
- H Number of windings 3,4,5,6,7,8 (Standard)
 Number of windings 3,4 (Fast track)
- I Shaft diameter 20 mm (SA37) and 25 mm (SA47)

In/ Out Feed Configurations



Spiral elevator, Standard and Fast track



Fixation of elevator:

The nuts (M8) can be used for a bracket (not delivered by FlexLink) to connect to a outfeed/infeed conveyor. Maximum allowable thread length M8 bolt sticking into Idler/Driver end is 14 mm (0,55")

Spiral elevator (Standard)
 Spiral elevator (Fast track)*
 Lower height 600, 700, 800, 900 or 1000 mm

5995512
5995958

Use online configurator when ordering.

* Spiral elevator, Fast track;

In order to offer a product with a very short from order to delivery time (Fast track), the number of choices for windings has been reduced, the available options are: 3 and 4.